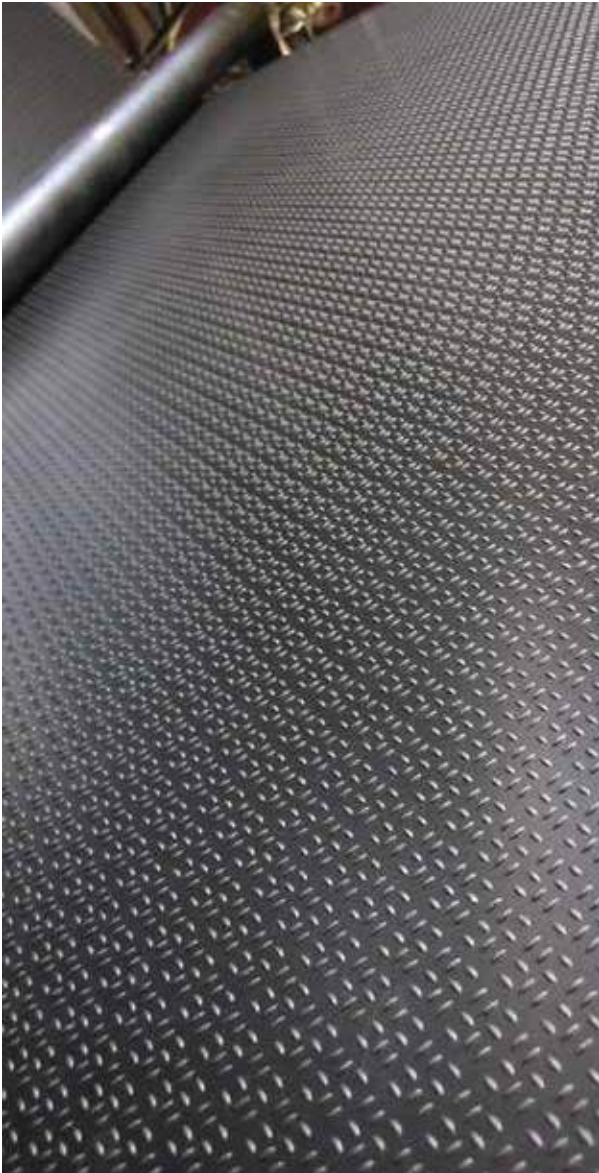


Think Quality...Think Value...Think SteigenTech



**Rubber & Plastic Technologies**

Rubber Sheeting & Matting 2015

# RUBBER SHEETING & MATTING

## Products Codifications

### Page 2 : Industrial Rubber Sheet Rolls

Model	Thickness	Color	Length	Width
EPDM: 1022	1: 1 mm	0: Transparent	1: 1 m	10: 1000 mm
Silicon: 1023	2: 2 mm	1: Red	2: 2 m	12: 1200 mm
FKM Viton®: 1024	3: 3 mm	2: Green	10: 10 m	14: 1400 mm
CR: 1025	-----	3: Black	20: 20 m	22: 2200 mm
NBR: 1026	50: 50 mm	4: yellow		
NR Pure Gum: 1112				
SBR:1113				

### Page 5 : Industrial & commercial Flooring Rolls

Model	Thickness	Color	Length	Width
Fine Ribbed: 1013				
Broad Ribbed: 1039	3: 3 mm	1: Red	10: 10 m	10: 1000 mm
Corrugate: 1007	4: 4 mm	2: Green	11: 11 m	12: 1200 mm
Diamond Tread: 1015	5: 5 mm	3: Black	-----	14: 1400 mm
Small Diamond: 1013	-----	5: Blue	20: 20 m	22: 2200 mm
Round Dot: 1012	10: 10 mm	6: Grey		
Check Runner: 1063				
Hammer Groove: 1128				

### Page 9 : Speciality Rubber Rolls

Model	Thickness	Color	Length	Width
Antistatic: 1008	2: 2 mm	1: Red	1: 1 m	10: 1000 mm
Insulation: 1118	3: 3 mm	2: Green	2: 2 m	12: 1200 mm
Sponge: 1200	4: 4 mm	3: Black	-----	14: 1400 mm
White food Grade: 110	-----	5: Blue	20: 20 m	16: 1600 mm
Textured: 1245	50: 50 mm	6: Grey		18: 1800 mm
		7: White		20: 2000 mm

### Page 12 : Agricultural Flooring

Model	Thickness	Color	Length	Width
Grooved : 2015	10: 10 mm	3: Black	1000 mm	1810 mm
Hexagon Grooved: 1265	12: 12 mm		1210 mm	1830 mm
Cow Stall: 1265	13: 13 mm		1220 mm	2000 mm
Diamond: 1033	15: 15 mm		1525 mm	2135 mm
Pebble: 1029	17: 17 mm			
	18: 18 mm			
	30: 30 mm			

### Page 14 : Drainage Mats

Model	Thickness	Color	Length	Width
Industrial	8 mm	1: Red	400 mm	400 mm
Commercial	11 mm	2: Green	500 mm	800 mm
Interlocking	15 mm	3: Black	600 mm	900 mm
	22 mm		915 mm	915 mm
			1000 mm	1500 mm
			1525 mm	

### Page 15 : Interlocked Mats

Model	Thickness	Color	Length	Width
Stall	12 mm	3: Black	1000 mm	1000 mm
Eva Stall	15 mm		1220 mm	1220 mm
	17 mm		1830 mm	1830 mm
	25 mm			
	30 mm			
	40 mm			

## INDUSTRIAL RUBBER SHEET ROLLS

### EPDM (Ethylène Rubber)

#### Structure details :



Long length

Excellent resistance to water, steam, ozone ageing, ultra violet and chemicals temperature from -40°C to +120°C

Moderate adhesion to metal, great electrical properties

#### Dimensions & Tolerances :

Thickness	Length	Width	Tolerance
1 mm to 6 mm	Rolls of 20 m	Standard : 1000 mm - 1400 mm - 1600 mm	Thickness (mm): +/- 10% Width (mm) : +/- 2%
8 mm to 20 mm	Rolls of 10 m		
20 mm to 50 mm	Rolls of 1 m	Special : 1600 mm - 2200 mm	Length (m) : +/- 5%
20 mm to 50 mm	Rolls of 2 m		

#### Application :

Matting for protection  
Rings and gaskets  
General use

#### Properties :

Easy to handle rolls  
Surface Protection  
Excellent inherent high and low temperature ranges  
Easy to clean  
Meets RoHS and REACH requirements

### Silicon Rubber

#### Structure details :



Great temperature range -70°C to +200°C

Extreme resistance to sunlight, ozone and many gases

Electrical insulator

Inert material suitable for medical applications

#### Dimensions & Tolerances :

Thickness	Length	Standard Width	Tolerance
1 mm to 10 mm	Rolls of 20 m	1000 mm - 1400 mm	Thickness (mm): +/- 10% Width (mm) : +/- 2% Length (m) : +/- 5%

#### Application :

Rings and gaskets  
General use

#### Properties :

Surface Protection  
Excellent resistance to extrem temperature  
Electrical insulation properties and water repellency  
Easy to clean  
Meets RoHS and REACH requirements

## INDUSTRIAL RUBBER SHEET ROLLS

### FKM VITON™ (Fluorelastomer Rubber)

#### Structure details :



Acid & alkali resistance  
Great Chemical resistance  
Good heat ageing resistance  
Extreme temperature resistance range -40°C to +250°C

#### Dimensions & Tolerances :

Thickness	Length	Standard Width	Tolerance
1 mm to 6 mm	Rolls of 20 m	1000 mm - 1200 mm	Thickness (mm): +/- 10% Width (mm): +/- 2% Length (m): +/- 5%
8 mm to 20 mm	Rolls of 10 m		
20 mm to 50 mm	Rolls of 1 m		
20 mm to 50 mm	Rolls of 2 m		

#### Application :

Matting for protection  
Rings and gaskets  
General use

#### Properties :

Retain strength and withstand embrittlement during long-term heat exposure  
Easy to clean  
Easy to handle rolls  
Meets RoHS and REACH requirements

### CR (Chloroprene Rubber, Neoprene™)

#### Structure details :



Long length, good adhesion to metal  
Good strength and abrasion properties  
Resist weathering and oxidative ageing  
Good resistance to temperature and ozone  
Temperature resistance range -20°C to +120°C

#### Dimensions & Tolerances :

Thickness	Length	Width	Tolerance
1 mm to 6 mm	Rolls of 20 m	Standard : 1000 mm - 1400 mm - 1600 mm	Thickness (mm): +/- 10% Width (mm): +/- 2% Length (m): +/- 5%
8 mm to 20 mm	Rolls of 10 m		
20 mm to 50 mm	Rolls of 1 m	Special : 1600 mm - 2200 mm	
20 mm to 50 mm	Rolls of 2 m		

#### Application :

Matting for protection  
Rings and gaskets  
General use

#### Properties :

Surface protection  
Excellent inherent high and low temperature ranges  
Easy to clean  
Easy to handle rolls  
Meets RoHS and REACH requirements

## INDUSTRIAL RUBBER SHEET ROLLS

### NBR (Nitrile Rubber)

#### Structure details :



Resistance to oil  
 Good mechanical properties at traction, copression and flexion  
 Moderate Ageing propertie  
 Temperature from -25°C to + 110°C  
 Low resistance to low temperature

#### Dimensions & Tolerances :

Thickness	Length	Width	Tolerance
1 mm to 6 mm	Rolls of 20 m	Standard : 1000 mm - 1400 mm - 1600 mm	Thickness (mm): +/- 10% Width (mm) : +/- 2%
8 mm to 20 mm	Rolls of 10 m		
20 mm to 50 mm	Rolls of 1 m	Special : 1600 mm - 2200 mm	Length (m) : +/- 5%
20 mm to 50 mm	Rolls of 2 m		

#### Application :

Anti Oil seal, ring and gaskets  
 General use

#### Properties :

Surface protection  
 Easy to clean  
 Easy to handle rolls  
 Excellent inherent high and low temperature ranges  
 Meets RoHS and REACH requirements

### NR Pure Gum (natural Rubber)

#### Structure details :



Low compression set and high resilience  
 Excellent dynamic and rebound properties  
 Sensitive to Ozone and weather aggression  
 Good temperature range -50°C to +90°C  
 Great electrical resistance

#### Dimensions & Tolerances :

Thickness	Length	Standard Width	Tolerance
1 mm to 10 mm	Rolls of 20 m	1000 mm - 1200 mm	Thickness (mm): +/- 10% Width (mm) : +/- 2% Length (m) : +/- 5%

#### Application :

Industrial work station  
 Gaskets  
 General use

#### Properties :

Highly abrasion resistant and tensile strength  
 Meets RoHS and REACH requirements

## INDUSTRIAL RUBBER SHEET ROLLS

### SBR (Styrene-Butadiène Rubber)

#### Structure details :



Anti-ageing and temperature resistance  
 Good tensile strength  
 Low compression set and high tear properties  
 Temperature from -45°C to +110°C  
 Moderate resistance to ozone

#### Dimensions & Tolerances :

Thickness	Length	Standard Width	Tolerance
1 mm to 6 mm	Rolls of 20 m	1000 mm - 1200 mm	Thickness (mm): +/- 10% Width (mm): +/- 2% Length (m): +/- 5%
8 mm to 20 mm	Rolls of 10 m		
20 mm to 50 mm	Rolls of 1 m		
20 mm to 50 mm	Rolls of 2 m		

#### Application :

Anti-oil seal, rings and gaskets  
 General use

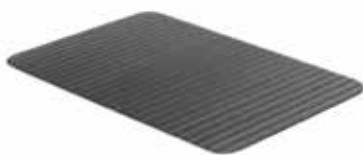
#### Properties :

Surface protection  
 Excellent inherent high and low temperature ranges  
 Easy to clean  
 Easy to handle rolls  
 Meets RoHS and REACH requirements

## INDUSTRIAL & COMMERCIAL FLOORING ROLLS

### Fine Ribbed

#### Structure details :



Long length  
 Non-porous  
 Anti slip  
 Resistant to Chemicals : according to the material

#### Dimensions & Tolerances :

Length	Width	Tolerance
Rolls of 10 to 20 meters	1000 mm	+/- 5%
	1200 mm	
	1220 mm	

#### Application :

Gym flooring  
 Utes & trailers  
 Door & walkways  
 Kennels, Truck beds, etc.

#### Properties :

No Joins  
 Avoid bacteria build-up  
 Easy to clean  
 Dries quickly  
 Reduce chance of injury  
 Meets RoHS and REACH requirements

## Broad Ribbed

### Structure details :



Long length  
 Non-porous  
 Anti slip  
 Resistant to Chemicals : according to the material

### Dimensions & Tolerances :

Length	Width	Tolerance
Rolls of 10 to 20 meters	1000 mm	+/- 5%
	1600 mm	

#### Application :

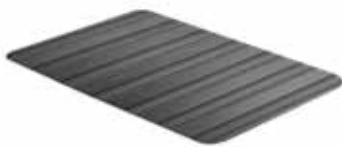
Gym flooring  
 Utes & trailers  
 Door & walkways  
 Kennels, truck beds, etc.

#### Properties :

No Joins  
 Avoid Bacteria build-up  
 Easy to clean  
 Dry quickly  
 Reduce chance of injury  
 Meets RoHS and REACH requirements

## Corrugate

### Structure details :



Long length  
 Non-porous  
 Anti slip  
 Resistant to Chemicals : according to the material

### Dimensions & Tolerances :

Length	Width	Tolerance
Rolls of 10 to 20 meters	1000 mm	+/- 5%
	1600 mm	

#### Application :

Gym flooring  
 Utes & trailers  
 Door & walkways  
 Kennels, truck beds, etc.

#### Properties :

No Joins  
 Avoid Bacteria build-up  
 Easy to clean  
 Dry quickly  
 Reduce chance of injury  
 Meets RoHS and REACH requirements

## INDUSTRIAL & COMMERCIAL FLOORING ROLLS

### Diamond Tread

#### Structure details :



Long length  
 Non-porous  
 Anti slip  
 Resistant to Chemicals : according to the material

#### Dimensions & Tolerances :

Length	Width	Tolerance
Rolls of 10 to 20 meters	1000 mm	+/- 5%
	1600 mm	

#### Application :

Gym flooring  
 Utes & trailers  
 Door & walkways  
 Kennels, Truck beds, etc.

#### Properties :

No Joins  
 Avoid bacteria build-up  
 Easy to clean  
 Dries quickly  
 Reduce chance of injury  
 Meets RoHS and REACH requirements

### Small Diamond

#### Structure details :



Long length  
 Non-porous  
 Anti slip  
 Resistant to Chemicals : according to the material

#### Dimensions & Tolerances :

Length	Width	Tolerance
Rolls of 10 to 20 meters	1000 mm	+/- 5%
	1600 mm	

#### Application :

Gym flooring  
 Utes & trailers  
 Door & walkways  
 Kennels, Truck beds, etc.

#### Properties :

No Joins  
 Avoid bacteria build-up  
 Easy to clean  
 Dries quickly  
 Reduce chance of injury  
 Meets RoHS and REACH requirements



## Round Dot

### Structure details :



Long length  
 Non-porous  
 Anti slip  
 Resistant to Chemicals : according to the material

### Dimensions & Tolerances :

Length	Width	Tolerance
Rolls of 10 to 20 meters	1000 mm	+/- 5%
	1600 mm	

#### Application :

Gym flooring  
 Utes & trailers  
 Door & walkways  
 Kennels, truck beds, etc.

#### Properties :

No Joins  
 Avoid Bacteria build-up  
 Easy to clean  
 Dry quickly  
 Reduce chance of injury  
 Meets RoHS and REACH requirements

## Check Runner

### Structure details :



Long length  
 Non-porous  
 Anti slip  
 Resistant to Chemicals : according to the material

### Dimensions & Tolerances :

Length	Width	Tolerance
Rolls of 10 to 20 meters	1000 mm	+/- 5%
	1600 mm	

#### Application :

Gym flooring  
 Utes & trailers  
 Door & walkways  
 Kennels, truck beds, etc.

#### Properties :

No Joins  
 Avoid Bacteria build-up  
 Easy to clean  
 Dry quickly  
 Reduce chance of injury  
 Meets RoHS and REACH requirements

## INDUSTRIAL & COMMERCIAL FLOORING ROLLS

### Hammer Grooved

#### Structure details :



Long length  
Non-porous  
Anti slip  
Resistant to Chemicals : according to the material

#### Dimensions & Tolerances :

Length	Width	Tolerance
Rolls of 10 to 20 meters	1000 mm	+/- 5%
	1600 mm	

#### Application :

Gym flooring  
Utes & trailers  
Door & walkways  
Kennels, Truck beds, etc.

#### Properties :

No Joins  
Avoid bacteria build-up  
Easy to clean  
Dries quickly  
Reduce chance of injury  
Meets RoHS and REACH requirements

## SPECIALITY RUBBER ROLLS

### Antistatic ESD

#### Structure details :



Incorporate a conductive buried layer ensuring superior ESD protection  
Antistatic, prevents effects of static electricity

#### Dimensions & Tolerances :

Length	Width	Tolerance
Rolls of 10 to 20 meters	1000 mm	+/- 5%
	1600 mm	

#### Application :

Computers rooms  
Workstations  
Any areas sensitives to electrons

#### Properties :

Prevent the effects of static electricity  
Important component of a static dissipative working area  
Very good lay flat properties  
Meets RoHS and REACH requirements

### Insulation

Structure details :



Working in the environment with the high requirements of the electrical modulus

#### Dimensions & Tolerances :

Length	Width	Tolerance
Rolls of 1 to 20 meters	1000 mm	+/- 5%
	2000 mm	

#### Application :

Workbench  
Gaskets-ts  
Matting for protection, etc.

#### Properties :

Good physical mechanical character  
Meets RoHS and REACH requirements

### Sponge

Structure details :



High temperature resistance  
Outstanding resistance to ageing, weathering, ozone and oil

#### Dimensions & Tolerances :

Length	Width	Tolerance
Rolls of 10 to 20 meters	1000 mm	+/- 5%
	1600 mm	

#### Application :

Matting for protection  
Ring and gaskets  
Flooring

#### Properties :

Multi-use  
Meets RoHS and REACH requirements

## SPECIALITY RUBBER ROLLS

### White food Grade

Structure details :



Long life  
Easy to clean

#### Dimensions & Tolerances :

Length	Width	Tolerance
Rolls of 10 to 20 meters	1000 mm	+/- 5%
	1200 mm	

#### Application :

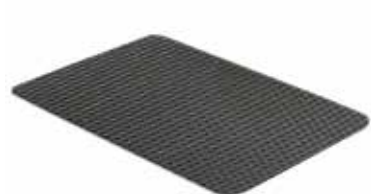
General Gasket  
Countertops  
Skirting

#### Properties :

Use in food, pharmaceutical and cosmetic processing  
Meets RoHS and REACH requirements

### Textured

Structure details :



Textured surface  
High tensile strength

#### Dimensions & Tolerances :

Length	Width	Tolerance
Rolls of 10 to 20 meters	1000 mm	+/- 5%
	1600 mm	

#### Application :

Industrial work station  
Service counters  
General use

#### Properties :

Long length  
Textured surface  
Anti-slip  
Meets RoHS and REACH requirements

## AGRICULTURAL FLOORING

### Grooved

Structure details :



Top Surface Design



Backface Design

Working in the environment with the high requirements of the electrical modulus

**Application :**

Workbench  
Gaskets  
Matting for protection, etc.

**Properties :**

Good physical mechanical character  
Meets RoHS and REACH requirements

### Hexagon Grooved

Structure details :



High temperature resistance  
Outstanding resistance to ageing, weathering, ozone and oil

**Application :**

Matting for protection  
Ring and gaskets  
Flooring

**Properties :**

Multi-use  
Meets RoHS and REACH requirements

### Hexagon Grooved

Structure details :



Made from recycled rubber  
Anti-slip design

**Application :**

Horse float & stables  
Calf & pig pens  
Heavy work areas  
Truck Beds

**Properties :**

Can cover large areas without movement  
Stress relief to animal muscles  
Easy to stall and clean  
Meets RoHS and REACH requirements

## AGRICULTURAL FLOORING

### Diamond

Structure details :



Made from recycled rubber  
Anti-slip design

**Application :**

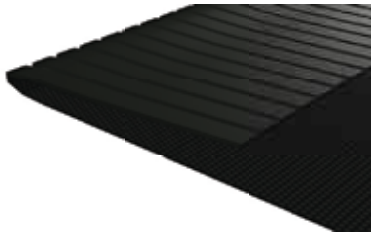
Horse float & stables  
Calf & pig pens  
Heavy work areas  
Truck Beds

**Properties :**

Can cover large areas without movement  
Stress relief to animal muscles  
Easy to stall and clean  
Meets RoHS and REACH requirements

### Textured

Structure details :



Made from recycled rubber  
Anti-slip design

**Application :**

Horse float & stables  
Calf & pig pens  
Heavy work areas  
Truck Beds

**Properties :**

Can cover large areas without movement  
Stress relief to animal muscles  
Easy to stall and clean  
Meets RoHS and REACH requirements

## DRAINAGE MATS

### Industrial

#### Structure details :



High Performance anti-fatigue  
 Drainage holes for wet areas  
 Modular Flexibility  
 Resistant to coolant, oil and heats

#### Application :

Oily, greasy industrial workstations  
 Food processing work stations  
 Door entrances  
 Bar and kitchen wet areas

#### Properties :

Grease and chemical resistant  
 Moulded bevelled edges on all sides  
 Meets RoHS and REACH requirements

### Commercial

#### Structure details :



High Performance anti-fatigue  
 Drainage holes for wet areas  
 Modular Flexibility  
 Resistant to coolant, oil and heats

#### Application :

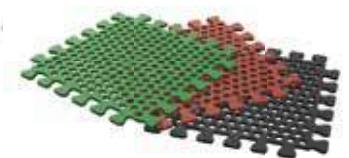
Oily, greasy industrial workstations  
 Food processing work stations  
 Door entrances  
 Bar and kitchen wet areas

#### Properties :

Grease and chemical resistant  
 Moulded bevelled edges on all sides  
 Meets RoHS and REACH requirements

### Interlocking kitchen mat

#### Structure details :



High Performance anti-fatigue  
 Modular Flexibility  
 Resistant to coolant, oil and heats

#### Application :

Oily, greasy industrial workstations  
 Food processing work stations  
 Door entrances  
 Bar and kitchen wet areas

#### Properties :

Grease and chemical resistant  
 Meets RoHS and REACH requirements  
 Interlocked design, easy to stall

## INTERLOCKED MATS

### Stall

#### Structure details :



Interlocking edges  
Large open design  
Raised pimples on underside  
Soft, wet hardwearing  
Made from rubber powder  
Anti-slip design  
Non-porous / absorbing

#### Application :

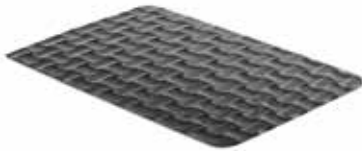
Wash-down areas for dirt bikes, ATV's, etc.  
Work areas  
Door entrances  
Horse float & stables  
Calf & pig pens  
Heavy work areas  
Truck Beds

#### Properties :

Can cover large areas without movement  
Exceptional drainage characteristics  
Allow mater & debtris to fall through  
Provide cushion effect under foot  
Stress relief animal muscles  
Easy to stall and clean  
Meets RoHS and REACH requirements

### Eva Stall

#### Structure details :



Non-porous / absorbing  
Easy to clean  
Impact absorbing

#### Application :

Horse yards, stables & pens

#### Properties :

Reduce stress in animals and in turn increases comfort  
Prevent animal injury from slipping over  
Meets RoHS and REACH requirements



# SteigenTech<sup>®</sup> products are intended for specialist trading only.

The content of this publication is provided for information only and without responsibility, it is subjected to corrections.

SteigenTech<sup>®</sup> obligations and responsibilities regarding its products are governed solely by the agreement under which they are sold.

Unless otherwise agreed in writing, the information contained herein does not become part of these agreements.

This publication does not contain any guarantee or agreed quality of SteigenTech<sup>®</sup> products or any warranty of merchantability, fitness for a particular purpose and non-infringement.

SteigenTech<sup>®</sup> may make changes in the products or services described at any time without notice.

SteigenTech<sup>®</sup> is not liable for any direct, indirect, incidental, consequential or punitive damages, arising out of the use of this publication.

This publication is provided on an «as is» basis. To the extent permitted by law, SteigenTech<sup>®</sup> makes no warranty, express or implied, and assumes no liability in connection with the use of information contained in this publication.

## **Application exclusions :**

For safety reasons, SteigenTech<sup>®</sup> belts may not be designed into, applied on, or sold as replacements for any of the following applications :

- Aircraft (propeller or rotor) drive systems or any inflight accessory system drives.
- Any type of lift system for personnel or product that relies solely on the belt for support without an appropriate fail safe type of backup support system(s).

**Copyright © 2015 SteigenTech<sup>®</sup>. All rights reserved**

**Reproduction strictly forbidden.**

**Any infringement will be prosecuted under the copyright act law.**

STEIGENTECH EUROPE

1 rue de la Haye - LE DÔME

BP12910 - 95731 PARIS ROISSY CDG CEDEX - FRANCE

Phone : +33 (0)1 49 19 49 43

Email : [info@steigentech.com](mailto:info@steigentech.com)

[www.steigentech.com](http://www.steigentech.com)

STEIGENTECH GERMANY

Richtbergstrasse 9

97493 BERGRHEINFELD - GERMANY

Phone : +49 (9721) 479899-0

Email : [info@steigentech.de](mailto:info@steigentech.de)

[www.steigentech.de](http://www.steigentech.de)

STEIGENTECH DRIVE PARTS DIRECT

Unit 2, Farthing Road, Industrial Estate, Sproughton

IPSWICH SUFFOLK IP1 5AP - UNITED KINGDOM

Phone : +44 (0) 1473 740485

Email : [sales@drivepartsdirect.com](mailto:sales@drivepartsdirect.com)

[www.drivepartsdirect.com](http://www.drivepartsdirect.com)

STEIGENTECH IBERICA

Rua Dr. Eduardo Santos Silva, 261 BJ2

4200-283 Porto - PORTUGAL

Phone : +351 220 942 672

Email : [sales.iberia@steigentech.com](mailto:sales.iberia@steigentech.com)

[www.steigentech.pt](http://www.steigentech.pt)

